

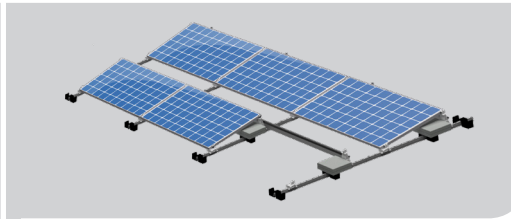
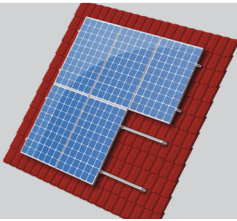
Codes & Regulations solar mounting systems - Ireland

VAN DER VALK



SOLAR SYSTEMS

Innovation House, Discovery Park
Ramsgate Road, Sandwich CT13 9FF
United Kingdom
T +44 (0)1304 897658
info@valksolarsystems.co.uk
www.valksolarsystems.co.uk



Strength and ballast calculations

- This document shows the used codes and regulations for the strength and ballast calculations for the Irish market.
- Calculations made by either the use of the pv planner or the engineers of Valk Solar Systems are according the underneath codes and assure the right strength for pitched roof and flat roof mounting systems and sufficient ballast for flat roof systems.

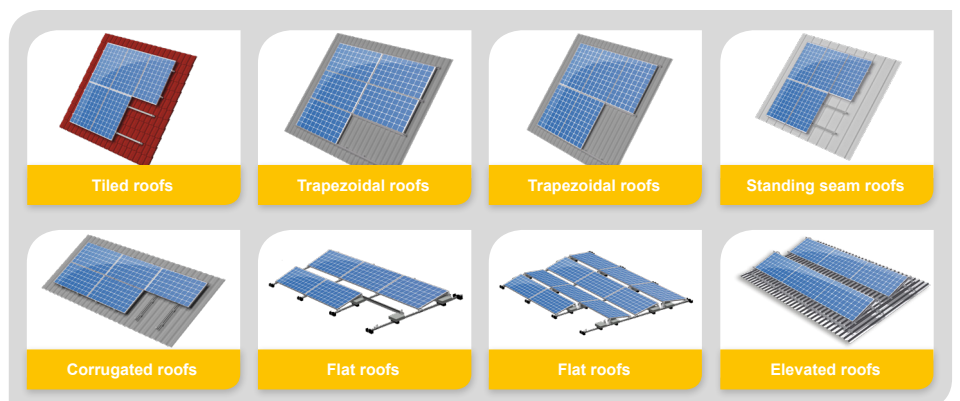
British standard

- The British standard codes are specifically used next to all relevant Eurocodes to determine the right wind speed and snow load. This can be used since the wind and snow map of UK and Ireland overlaps.
- The pitched roof clamp systems are MCS012 approved (MCS BBA 0159).
- For calculations and designs of solar projects all the right variables, like wind and snow area, must be selected in the pv planner or entered in the relevant checklists.

Relevant codes & regulations

- EN 1990 Basis of structural design
- EN 1991-1-3 Actions on structures / Snow loads
- EN 1991-1-4 Actions on structures / Wind actions
- NEN 7250 Solar systems - Integration in roofs and facades - Building aspects
- BS EN 1990 British Standard appendix
- BS EN 1991-1-3 British Standard appendix
- BS EN 1991-1-4 British Standard appendix

Relevant mounting systems



Reference calculation

Surrounding parameters	Roof hook span
Solar panel (guidance): 1650x1005x28-50 mm, 19 kg	Strongline roof hook
Middle zone roof	• Max roof height: 9 m
Roof pitch: 45°	• Max wind speed: 27,5 m/s
Snow zone: 4	• Max span: 1200 mm
Terrain category: town	
Height above sea level: 50 m	Slate roof hook
Distance to coast line: 5 km	• Max roof height: 9 m
Distance to city border: 5 km	• Max wind speed: 27,5 m/s
Rafter distance: 600mm	• Max span: 600 mm