

Datasheet ValkPitched - Trapezoidal

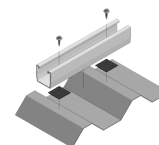
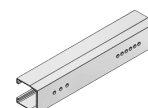
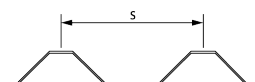
- Technische specificaties**
- Mounting system for pitched roofs fitted with trapezoidal or corrugated plates in steel or aluminum.
 - Fixation by use of thin sheet screw or rivet.
 - Minimum crown width in case rivets are used: 25 mm.
 - Watertight seal by neoprene ring on the thin sheet screw and rubber plates.
 - Profiles equipped with pre-punched hole pattern and pre-pasted EPDM rubber.
 - Panels can be installed in both landscape and portrait configuration.

- ValkPitched - Trapezoidal vs competitive systems**
- Universal mid- and end-panel clamps (H 28-50 mm).
 - Thanks to the wide underside, profiles have a large bearing surface on the thin sheet material.
 - Very fast mounting.
 - Low costs due to minimal material requirement.

- Project calculation**
- With the help of the ValkPVplanner, projects can easily be calculated in accordance with the applicable standards and Eurocodes.

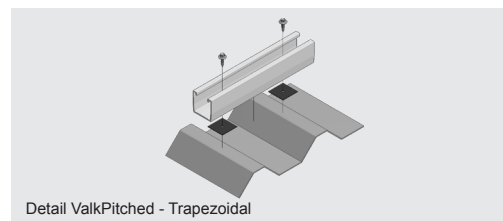
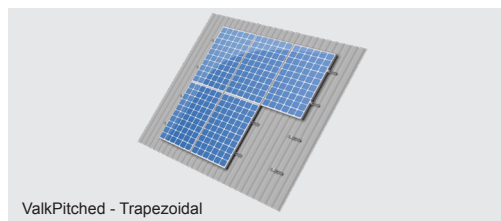
Article information

Profile lengths for portrait mounting		
Article numbers	Description	CtC (S)
Material type	EN AW 6060 (AlMgSi 0.5)	
7269280*	Alu. trapezoidal profile L = 280 mm	120 - 200 mm
7269360*	Alu. trapezoidal profile L = 360 mm	200 - 280 mm
7269440*	Alu. trapezoidal profile L = 440 mm	280 - 360 mm
7269480**	Alu. trapezoidal profile L = 480 mm	340 - 400 mm
701807000	Alu. trapezoidal profile L = 7000 mm	
Profile lengths for landscape mounting		
7269280*	Alu. trapezoidal profile L = 280 mm incl. EPDM	
7269240*	Alu. trapezoidal profile L = 240 mm incl. EPDM	
Fixation material		
779223	Alu. rivet	see overleaf for more specifications
773225	SS thin sheet screw	see overleaf for more specifications
779220	Rubber plate	see overleaf for more specifications






* Note: the trapezoidal profiles are standard covered with EPDM rubber on the underside for a watertight seal.
 ** Minimum order quantity 20 pieces - no stock item.

CONTACT DETAILS | DEVELOPER AND PRODUCER OF SOLAR MOUNTING SYSTEMS




Datasheet ValkPitched - Trapezoidal

Specification table fixation material

Aluminium rivet		
Article number	779223	
Description	Aluminium rivet with EPDM washer	
Size	6.3 x 23.4 mm	
Rivet	Ø 6.3 +/- 0.1 mm	
Head	Ø 14.4 +/- 0.3 mm	
Pin tail	Ø 3.9 mm x ≥ 25.4 mm	
Washer	EPDM	
Drill hole	6.5 mm incl. aluminium profile	
Clamp range	3.2 - 9.5 mm	
Plate thickness	Steel 0.35 - 1.25 mm en aluminium 0.5 - 1.5 mm	
		
Thin sheet screw		
Article number	773225	
Description	SS thin sheet screw with EPDM (E16) washer	
Size	6.0 x 25 mm	
Material	Bimetal (Stainless steel A2 / hardened steel)	
Plate thickness	Steel 0.35 - 1.25 mm and aluminium 0.5 - 1.5 mm	
Advice max. torque	Steel plate	> 0.8 mm = 3 Nm
	Steel plate	< 0.8 mm = 1 Nm
	Aluminium plate	> 0.8 mm = 1 Nm
	Aluminium plate	< 0.8 mm = 0.5 Nm
Processing speed from 1600 to 1800 rev / min until the sheet is penetrated. Then tighten the screw at a slow speed.		
		
Rubber plate		
Article number	779220	
Description	Rubber plate for trapezoidal profile	
Size	40 x 40 x 1 mm	
Material	EPDM 70 shore	
Central hole	Ø 5 mm	
		

Tool

Rivet pliers (example)		
Brand	Masterfix	
Type	MFX 260 - Rivet pliers with long legs for heavy use	
Capacity	Ø 3.0 - 6.4 mm stainless steel	
Body	ABS with steel parts	
Handle	Steel	
Length	500 mm	
Attachments	Nose pieces Ø 3.0- 6.4 mm	1 Collecting cup for the towing pin
		

CONTACT DETAILS | DEVELOPER AND PRODUCER OF SOLAR MOUNTING SYSTEMS