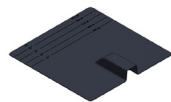




# Datasheet ValkPitched - Slate roofs

## Roof mounting / requirements

- The slate hook is attached to a suitable structural substructure of the roof with two screws:
  - 1x 747872 - SS slate hook - side + hammerhead bolt and flanged nut **or**
  - 1x 747873 - SS slate hook - side twist + hammerhead bolt and flanged nut
- Per slate hook following materials required:
  - 1x 747875 - Flashing
  - 1x 747878 - Flashing mounting kit; 1x foam, 2x pieces of wood, 3 Hall hook (747876)
  - 2x 773840 - SS torx-screw 5,5x38 T30 **or**
  - 2x 773360 - SS torx-screw 5.5x58 T30



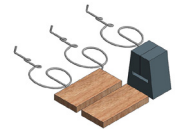
Art. 747875  
Flashing for slate hook



Art. 747872  
SS slate roof hook



Art. 747873  
SS slate roof hook - twist



Art. 747878  
Flashing mounting set  
for slate hook

## Technical specifications

- Specially designed mounting system for pitched slate roofs using "flashing".
- Hooks available for horizontal and vertical profile mounting (portrait / landscape).
- Compatible with both the ValkPitched - Clamp and ValkPitched - Insert profiles.

### Roof hook:

		Frm - [N]		
Article number	Description	up	down	parallel
747872	SS slate roof hook	-415,8	808	624
747873	SS slate roof hook - twist	-739,7	1132	1110

### Flashing:

- Material polypropylene, with an addition of UV and temperature resistant material which ensures a minimum lifespan of 20 years.
- UV resistant.
- Flame retardant.
- Does not become brittle during frost periods.

## Benefits

- Limited number of parts required due to flashing.
- Flashing and roof hook attachment is simplified using the flashing mounting kit.
- Easily replace the slates using the Hall hook.
- The flashing provides a neat draining process.

## Calculations

- Using the free ValkPVplanner, it is easy to calculate the number of roof hooks and flashings and the distance between roof hooks.

## CONTACT DETAILS | DEVELOPER AND PRODUCER OF SOLAR MOUNTING SYSTEMS