

## Datasheet ValkPitched - Corrugated steel roof

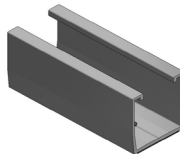

### Technical specifications

- Mounting system for pitched roofs fitted with trapezoidal or corrugated plates in steel or aluminum.
- Profiles equipped with pre-punched hole pattern and.
- Panels can be installed in both landscape and portrait configuration.

### USP's

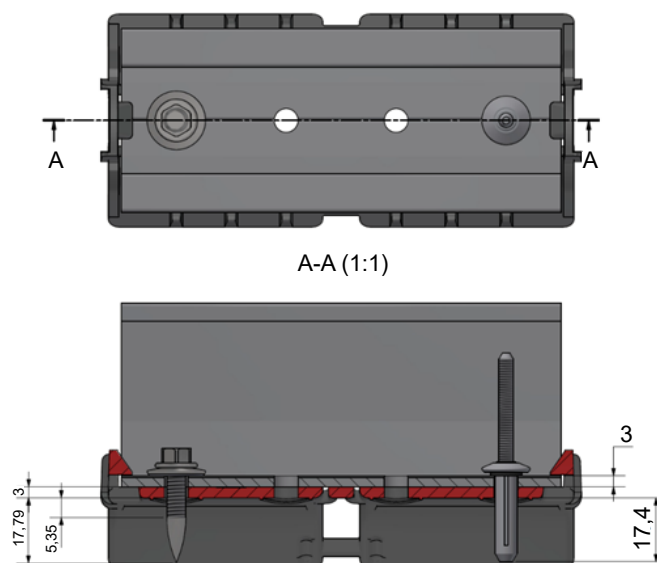
- Logistical advantage due to short profile lengths.
- Watertight seal by EPDM rubber.
- Pre-punched hole(s) in profiles for quick and easy mounting.

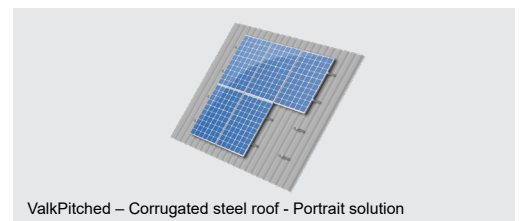
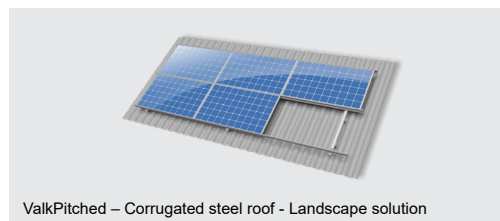
### Article information – Landscape solution

Material no.	7269120	732015
Description	Trapezoidal profile L=120mm + EPDM	Corrugated roof adapter
GTIN code	08719632521228	08719632527978
Image		
Weight (kg)	0,132	0,03
Pcs. per packaging	100	50

### Usage

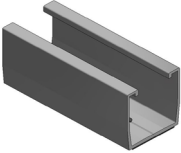
- Always observe the applicable building regulations.
- Fixation by use of rivet or thin sheet screw.
- Radius of crown 23 mm until 45 mm.
- Watertight seal is pre-pasted.







## Datasheet ValkPitched - Corrugated steel roof

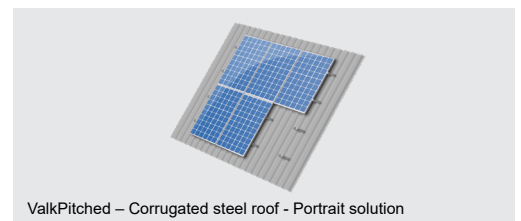
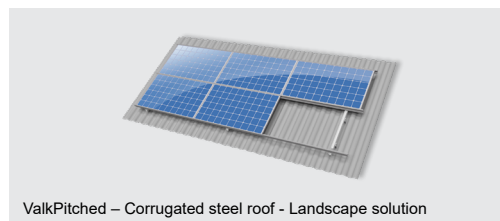
### Article information – Portrait solution

Material no.	7270220
Description	Trapezoidal profile for steel corrugated roofs L=220mm
GTIN code	08719632521310
Image	
Weight (kg)	0,222
Pcs. per packaging	100

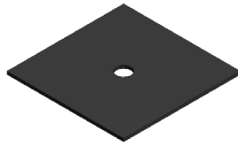
Material no.	779223	
Description	Aluminium rivet with EPDM washer	
Size	6.3 x 23.4 mm	
Rivet	∅ 6.3 +/- 0.1 mm	
Head	∅ 14.4 +/- 0.3 mm	
Pin tail	∅ 3.9 x ≥ 25.4mm	
Washer	EPDM	
Drill hole	6.5 mm inc. aluminium profile	
Clamp range	3.2 – 9.5 mm	
Plate thickness	Steel 0.35 – 1.25 mm	
Pcs. per packaging	100	

Material no.	773225	
Description	Ss. Thin sheet screw with EPDM (E16) washer	
Size	6.0 x 25mm	
Material	Bimetal (Stainless steel A2 / hardened steel)	
Plate thickness	Steel 0.35 - 1.25mm and aluminium 0.5 - 1.5 mm	
Adviced max. torque	Steel plate	>0.8mm = 3Nm
	Steel plate	>0.8mm = 3Nm
Pcs. per packaging	100	





## Datasheet ValkPitched - Corrugated steel roof

Material	779220
Plate thickness	Rubber plate 40x40x1mm
Adviced max.	08719632521204
torque	
Image	
Weight (kg)	0,0024
Pcs. per packaging	100

### Usage

- CtC from 75 – 177mm.
- Longer lengths also available on request.
- Always observe the applicable building regulations.
- Fixation by use of rivet.
- First hole is pre-punched. Second hole needs to be pre-drilled at center of crown.
- To ensure watertightness, a rubber plate should be placed under the trapezoidal profile at each fixation point.

### Calculations

With the help of the [ValkPVplanner](#), projects can easily be calculated in accordance with the applicable standards and Eurocodes.

### Alternatives to corrugated roofs

Check also the [Datasheet SS hanger bolts for wooden purlins](#) and the [Datasheet SS hanger bolt for steel purlins](#). These are alternatives to corrugated roofs.